



مدرسة جيمس وينشستر
GEMS Winchester School
ABU DHABI

UNIFORM GUIDE

THREADS

INTRODUCTION ■ ■ ■

Dear Parent,

This guide has been put together to assist you on the following :

- Selecting the correct uniform for your child
- Identifying the correct size
- Maintaining the uniform
- Ordering
- Information on customer service

We hope that you will find this guide useful. If you have any comments or suggestions relating to this guide kindly email these to support@threadsme.com.

We wish your child all the success for this academic year and would like to thank you for your continued support.

*threads*TM

INDEX ■ ■ ■

PAGE NO.

• FS 1 - FS 2 UNISEX	4
• GRADE 1 - 6 BOYS	5
• GRADE 1 - 6 GIRLS	6
• GRADE 7 - 11 BOYS	7
• GRADE 7 - 11 GIRLS	8
• GRADE 12 - 13 BOYS	9
• GRADE 12 - 13 GIRLS	10
• UNISEX PE AND WINTER	11
• UNIFORM CARE	12
• HOW TO ORDER	13
• SIZING	14
• SIZING	15
• HOW TO MEASURE	16
• CUSTOMER CARE	17

* All measurements referred to in this guide, are in inches.



مدرسة جيمس وينشستر
GEMS Winchester School
ABU DHABI



SHORT SLEEVE POLO SHIRT



SHORTS



SOCKS / LEGGINGS / TIGHTS



BLACK SHOES



HAIR BAND / SCRUNCHIE



SCHOOL BAGS WITH LOGO



PLEASE REFER TO THE SIZING GUIDE ON PAGE 14 & 15
ALL COLOURS ARE FOR ILLUSTRATIVE PURPOSES ONLY.

GRADE – 1 TO 6 (Boys)



مدرسة جيمس وينشستر
GEMS Winchester School
ABU DHABI

SHORT SLEEVE SHIRT



NAVY STRIPED TROUSERS



TIE



SHOES & SOCKS



Black Velcro shoes

BLACK BELT



SCHOOL BAGS WITH LOGO

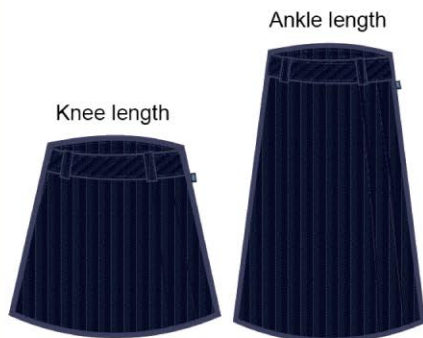


PLEASE REFER TO THE SIZING GUIDE ON PAGE 14 & 15
ALL COLOURS ARE FOR ILLUSTRATIVE PURPOSES ONLY.

SHORT SLEEVE BLOUSE



NAVY STRIPED SKIRTS



TIE & BELT



LEGGINGS / TIGHTS / SOCKS / SHOES



HAIR BAND / SCRUNCHIE / SCARF



SCHOOL BAGS WITH LOGO



PLEASE REFER TO THE SIZING GUIDE ON PAGE 14 & 15
ALL COLOURS ARE FOR ILLUSTRATIVE PURPOSES ONLY.

GRADE – 7 TO 11 (Boys)



مدرسة جيمس وينشستر
GEMS Winchester School
ABU DHABI

SHORT SLEEVE SHIRT



NAVY STRIPED TROUSERS



TIE & BELT



SHOES



Black Lace shoes

Black Velcro shoes

SOCKS



SCHOOL BAGS WITH LOGO



16 Inches bag

18 Inches bag

PLEASE REFER TO THE SIZING GUIDE ON PAGE 14 & 15
ALL COLOURS ARE FOR ILLUSTRATIVE PURPOSES ONLY.

GRADE – 7 TO 11 (Girls)

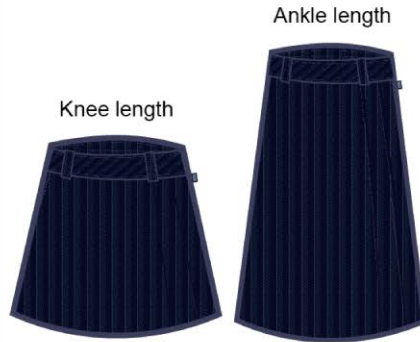


مدرسة جيمس وينشستر
GEMS Winchester School
ABU DHABI

3/4 SLEEVE BLOUSE



NAVY STRIPED SKIRTS



NECK SCARF & BELT



LEGGINGS / TIGHTS / SOCKS / SHOES



HAIR BAND / SCRUNCHIE / SCARF



SCHOOL BAGS WITH LOGO



PLEASE REFER TO THE SIZING GUIDE ON PAGE 14 & 15
ALL COLOURS ARE FOR ILLUSTRATIVE PURPOSES ONLY.

GRADE – 12 TO 13 (Boys)



مدرسة جيمس وينشستر
GEMS Winchester School
ABU DHABI

SHORT SLEEVE SHIRT



NAVY STRIPED TROUSERS



TIE



NAVY SOCKS



BLACK SHOES



BLACK BELT



SCHOOL BAGS WITH LOGO

16 Inches bag



SCHOOL BAGS WITH LOGO



18 Inches
bag

PLEASE REFER TO THE SIZING GUIDE ON PAGE 14 & 15
ALL COLOURS ARE FOR ILLUSTRATIVE PURPOSES ONLY.

GRADE – 12 TO 13 (Girls)



مدرسة جيمس وينشستر
GEMS Winchester School
ABU DHABI

WHITE 3/4 SLEEVE BLOUSE



KNEE LENGTH SKIRT



ANKLE LENGTH SKIRT



NECK SCARF



LEGGINGS / TIGHTS / SOCKS



HAIR BAND / SCRUNCHIE / SCARF



BLACK SHOES



BLACK BELT



SCHOOL BAGS WITH LOGO



PLEASE REFER TO THE SIZING GUIDE ON PAGE 14 & 15
ALL COLOURS ARE FOR ILLUSTRATIVE PURPOSES ONLY.

GRADE – UNISEX PE & WINTER



مدرسة جيمس وينشستر
GEMS Winchester School
ABU DHABI

POLO SHIRT-GRADE 1 TO 6



POLO SHIRT-GRADE 1 TO 6



POLO SHIRT-GRADE 7 TO 13



NAVY TRACK



WHITE SOCKS



WHITE SHOES



LEGIONNAIRE CAP



PULLOVER - SLEEVELESS



PULLOVER - FULL SLEEVE



PLEASE REFER TO THE SIZING GUIDE ON PAGE 14 & 15
ALL COLOURS ARE FOR ILLUSTRATIVE PURPOSES ONLY.

UNIFORM CARE GUIDE



مدارسه جيمس وينشستر
GEMS Winchester School
ABU DHABI

WASH CARE SYMBOLS



The following guidelines will help you gain longevity from your garment.

SKIRTS/TROUSERS/PINAFORE /SHORTS

Wash at 40°C. Higher temperatures will cause shrinkage, affect the colour or weaken the fibres. Wash dark colours separately. Avoid strong fabric conditioners as they can break the fibres. Do not bleach.

Do not tumble dry pleated garments as the pleats will disappear. For best results simply drip dry after washing.

If you want to improve the creases, use a steam iron or a clean damp cloth, with a regular iron. Do not use a hot iron directly on the garment.

SPORTS SHORTS/TRACK PANTS/PE POLO SHIRTS

Always wash at 40°C. Higher temperatures will cause shrinkage, affect the colour or weaken the fibres. Wash dark colours separately. Avoid strong fabric conditioners. Do not bleach.

These shorts do dry very quickly if left to dry naturally, but if you want to tumble dry them ensure they are on a cool setting.

Ironing is not necessary for these shorts. However if you want to iron, use a cool iron setting and place a clean damp cloth between the garment and the iron. Do not iron directly on to the garment and do not use excessive heat as this makes the fabric brittle. Do not iron on the print or Embroidery directly please iron on reverse.

SHIRTS - BLOUSES 65% Polyester, 35% Cotton weave

Can be machine washed on a gentle polyester/easy care/delicate programme up to 40°C. Avoid strong fabric conditioners. Do not bleach.

These garments can be tumble dried on a cool/low setting. If the temperature is higher the fibres can be damaged and shrinkage may occur.

With these garments ironing is not always necessary if hung up after washing, however if you want a smart finish on the garment use the synthetic setting and iron directly on to the garment ironing is easier if the garment is slightly damp. Do not iron on the print or Embroidery directly please iron on reverse.

Knitted fabrics
100% acrylic;
combinations of:
wool/nylon, wool/acrylic,
wool/polyester (jumpers,
cardigans, scarves &
hats); cotton/acrylic;
cotton/polyester;
cotton/nylon

Wash knitted garments inside out to reduce the loose fibres adhering to the outer surface of other garments. Always wash the garment separately, or with others of similar colour; use a gentle wool cool wash programme (30°C) and only mild detergent if required. Some fabric conditioners may harm the garment fibres thereby increasing pilling.

Do not tumble dry, the fabric can be damaged and the neck, welt and cuffs can lose their elasticity. ALWAYS dry flat and out of direct sunlight.

NEVER iron on the face fabric of the garment, as it will change the appearance of the garment and cause shine. Always iron the inside of the garment.

SHOE CARE - BLACK

Simply remove excess dirt with a cloth and/ or a brush and apply the cream shoe polish never liquid shine evenly to your shoes.

Make it a point to polish your shoes once in 2 days to restore the appearance of your shoes.

Store your shoes using a shoe tree, this will help the shoe retain its shape. If you don't have a shoe tree, stuff the toe cap with newspaper or tissue.

Never store shoes near direct heat.

SHOE CARE - WHITE

Avoid washing them in a washing machine and especially avoid putting them in the dryer.

Always use a mild detergent and a soft brush to clean them and air dry the shoes after washing.

Once clean, consider spraying canvas shoes with a "Scotchguard" type fabric protector. Test the spray on the tongue of the shoe to make sure it won't stain.

* KINDLY NOTE THAT ANY PRINTS / LOGOS / EMBELLISHMENTS MUST NOT BE IRONED ON DIRECTLY BUT INSTEAD ON THE REVERSE.

TO PLACE AN ORDER ■ ■ ■

- Products are available at the school uniform stores from Sunday-Thursday between 8am - 11pm, except on public holidays.
- Visit our retail shop at Al Quoz, behind Golden and Diamond Park- next to Arab Tech, (For location map please visit our website - www.threadsme.com or email us on support@threadsme.com) open between 9:30am - 7:30pm, Saturday - Thursday. Closed on Friday and public holidays.
- For a home delivery option please email us at support@threadsme.com with your order. Our customer service agent will process your order and you can pay the courier (cash only) upon delivery. The customer service agent will advise you of the delivery charge prior to dispatching your order.
- We will soon be launching our online shopping portal, where you will need to register, fill out the order form and complete the online payment. Subject to availability your order will be dispatched within 2 - 4 working days to your registered location.
- A made to measure option is also available if your preferred size is not in stock. The standard delivery time is 15 days during the off peak seasons and will extend up to 30 days during the peak seasons. To request a made to measure form or require any assistance on made to measure kindly send an email to support@threadsme.com.

SIZING GUIDE ■ ■ ■

SHIRT

SIZE	6	8	10	12	14	16	18	20	22	24
CHEST	27	29	32	35	38	41	44	46	48	51
LENGTH	19	20.5	22	23.5	25	26.5	28	29.5	30.75	32

SKIRTS (KNEE LENGTH & ANKLE LENGTH)

SIZE	2	4	6R	6L	8	10	12	14	16	18	20	22	24
FITS WAIST	21-23	22-25	23-26	23-26	25-28	26-29	27-30	29-32	31-34	33-36	35-38	37-40	39-42
KNEE LENGTH	13.5	15.5	17.5	22	19.5	12.5	23.5	24	25	26.5	26.75	27.5	
ANKLE LENGTH	26.5	27.5	28.5	29.5	30.5	31.5	33.5	34.5	36.5	38.5	39.5	40.5	41.5

TROUSERS

SIZE	6	8	10	12	14	16	18	20S	20R	20L	22	24S	24R	24L	26	28
FITS WAIST	20-24.5	21-25.5	22-26.5	23-27.5	24-28.5	25-29.5	26-30.5	27-31.5	27-31.5	27-31.5	28-32.5	29-33.5	29-33.5	29-33.5	33-37.5	37-41.5
LENGTH	27.5	28.5	29.5	30.5	31.5	32.5	34	35.5	37.5	40	36.5	38.5	41.5	43	43	43.5

KG SHORTS

SIZE	2	4	6	8	10			
FITS WAIST	17-26	18-28	19-30	20-33	22-35			
LENGTH	12	13	14	15	17			

KG PE POLO

SIZE	2	4	6	8	
CHEST	22	25	26	28	
LENGTH	14.5	15.25	17	17.5	

LAB COAT

SIZE	S	M	L	XL	
CHEST	17	19	21	22	
LENGTH	33	33	35	37	

ALL MEASUREMENTS IN CM/INCHES

SIZING GUIDE ■ ■ ■

UNISEX PE POLO

SIZE		6	8	10	12	14	16	18	20	22	24
CHEST		26	29	31	33	36	38	40	42	45	48
LENGTH		17	19	20.5	22	23.5	24.5	25.5	27	28	29.5

UNISEX TRACK

SIZE	2	4	6	8	10	12	14	16	18	20	22	24	26	28	30	32
FITS WAIST	17-25	19-27	20-28	21-29	22-30	23-31	24-31.5	25-33	26-34	27-35	28-36.5	29-37.5	30-39	32-41	34-43	38-48
LENGTH	23	25	27	29	31	33	34	35	36.5	38	39.5	41	42.5	43.5	44.5	45

PULLOVER

SIZE	20	22	24	26	28	30	32	34	36	38	39	40	42	44	46
CHEST	25	26	28	29	30	32	34	36	38	40	41	42	44	44	45
LENGTH	16.5	17	18	19	20.5	20.5	21.5	22.5	22.5	24.5	25.5	26	27	27.5	28

SHOES

UK SIZE	9	10	11	12	13	1	2	3	3.5	4	4.5	5	6	7	8	9	10	11	12	13
EU SIZE	27	28	29	30	31	32	33	34	35	36	37	38	39	40	41	42	43	44	45	46

TIE

SIZE	S		M		L
LENGTH	13		16		20

SOCKS/ LEGGINGS

SIZE	XS	S	M	L	XL	2XL	3XL
FOOT LENGTH	15	17	19	21	23	25	27

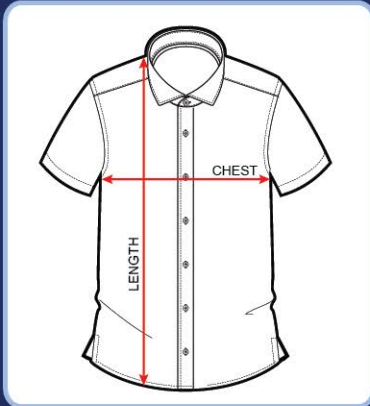
BELT

SIZE	XS	S	M	L	XL	2XL	3XL
WAIST	18-22	23-27	28-32	33-37	38-42	43-47	48-52

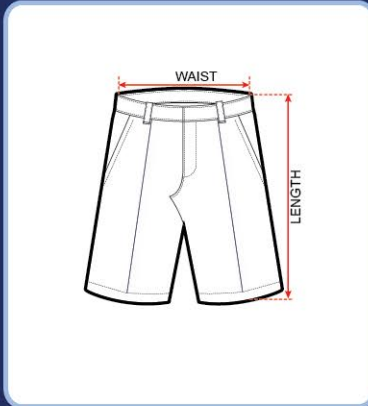
ALL MEASUREMENTS IN CM UNLESS SPECIFIED

HOW TO MEASURE ■ ■ ■

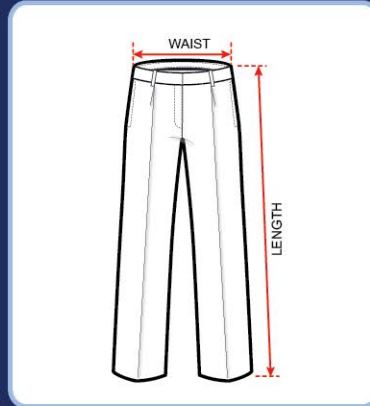
SHIRT / BLOUSE / PE POLO



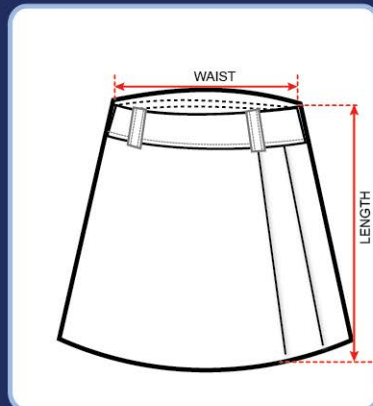
SHORTS / PE SHORTS



TROUSER / TRACK PANTS



SKIRT - KNEE & LONG



- At Threads we take our commitment to service very seriously and any customer concern registered, will receive an immediate acknowledgement and a response within 48 hours.
- You can visit our website at www.threadsme.com and fill out an enquiry form if you wish for a customer service agent to contact you about an order you may have placed or intend to place.
- If you wish to register a concern on any matter related to the product or staff, please call our toll free no. 800-Threads(8473237) where our customer service agent will register your concern and provide you with a case id which can be quoted in all future correspondences. Alternatively you may also choose to send us an email at support@threadsme.com
- In the event you are not satisfied with the solution offered please call our offices, quote your case Ref. no. and ask to speak to our head of operations. Should he not be able to provide you with a solution in reasonable time you can write to ceo@threadsme.com